

TM

# FLOORMASTER

F01 16082017

## 2 in 1 Cordless Rechargeable Vacuum Cleaner



## INSTRUCTION MANUAL

Model Ref: F01

Thank you for choosing the Floormaster 2 in 1 Cordless Rechargeable Vacuum Cleaner. All products brought to you by Floormaster by Giani are manufactured to the highest standards of performance and safety.

Before use, please read this manual carefully. It gives important instructions about safety, use and maintenance of your appliance.

Remove all packaging material. You may wish to keep the packaging for future use or storage of your appliance. Alternatively, dispose of accordingly.

## Index

Important Safety Information .....	02
Warning .....	03
Product Overview .....	04
Before First Use .....	05
Assembling Your Vacuum .....	05
Cleaner Operation .....	06
Battery Charging .....	06
Emptying The Dust Tank .....	07
Cleaning The Filters .....	08
Clearing a Blockage .....	09
Using the Handheld Vacuum .....	10
Storing the Vacuum .....	12
Troubleshooting .....	13
Technical Information .....	13
After Sales Support .....	14
Product Guarantee .....	14

## Important Safety Information

**WARNING** - To reduce the risk of fire, electric shock, or injury:

- DO NOT run the appliance over the charger cable.
- DO NOT operate the system if the appliance or any other part of the system has been dropped or damaged.
- DO NOT disassemble or attempt to repair the vacuum cleaner.
- DO NOT pick up any flammable or combustible liquids or use in areas where they may be present.
- DO NOT pick up anything that is burning or smoking such as cigarettes, matches or hot ashes.
- DO NOT use the vacuum without the dust cup filter in place.
- DO NOT allow the appliance to be used as a toy. Close attention is necessary when used near children, pets or plants.
- DO NOT unplug the charger by pulling on the cord.
- DO NOT handle the charger or vacuum with wet hands.
- DO NOT put any objects into openings.
- DO NOT use with any opening blocked.
- DO NOT use with mains extensions, external timer or remote control systems
- Keep free of dust, lint, hair and anything else that may reduce air flow, into and around the dust tank.
- Keep hair, loose clothing, fingers and all parts of the body away from opening and moving parts.
- Use extra care when cleaning on stairs.

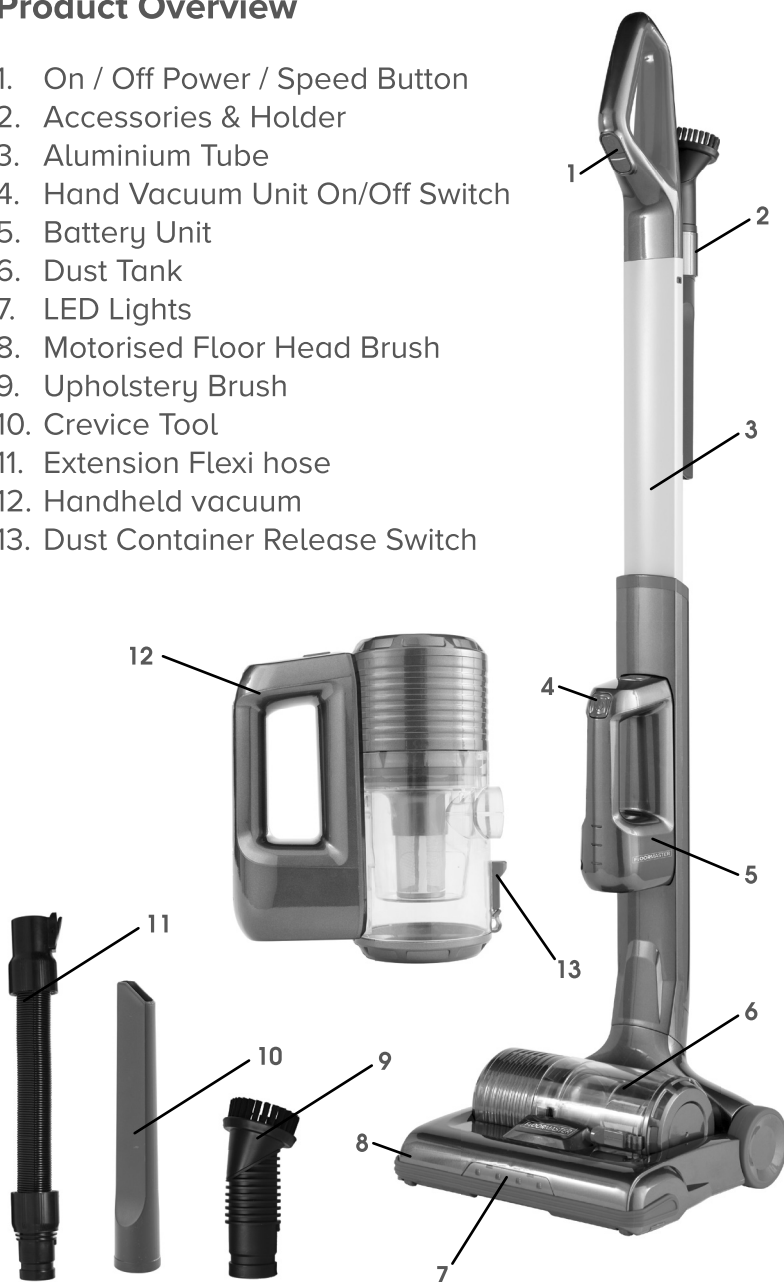
- Only use the appliance for its intended use.
- Keep the charging cable away from any heated surfaces
- Store your appliance indoors, in a cool, dry area.
- Keep your work area well lit.
- Keep the end of the stick, and the attachments away from your face and body when operating.
- Use only on dry surfaces.
- Using improper voltage may result in damage to the motor and possible injury to the user. Correct voltage is listed on the rating label.
- Keep the appliance and its charger out of reach of children.
- To protect against a risk of electric shock, do not immerse any part of the appliance in water or other liquids.
- This appliance is intended for household use only. Follow all user instructions in this manual.
- Only use the manufacturer's recommended accessories as supplied.

## **WARNING:**

- DO NOT operate the vacuum cleaner too close to heaters or radiators.
- Before inserting the charger plug into the wall outlet, make sure that your hands are dry.
- Before you start vacuuming, make sure to remove large or sharp objects that might damage the dust cup filter.

## Product Overview

1. On / Off Power / Speed Button
2. Accessories & Holder
3. Aluminium Tube
4. Hand Vacuum Unit On/Off Switch
5. Battery Unit
6. Dust Tank
7. LED Lights
8. Motorised Floor Head Brush
9. Upholstery Brush
10. Crevice Tool
11. Extension Flexi hose
12. Handheld vacuum
13. Dust Container Release Switch



## Before First Use

Before using your vacuum cleaner for the first time, wipe all parts with a soft damp cloth

## Assembling Your Vacuum Cleaner

1. Slot the handle into place until it clicks securely into the base unit (Fig 1).



2. Attach the battery into the base unit. (Fig 2).



3. Attach the accessories holder and the accessories to the handle (Fig 3).

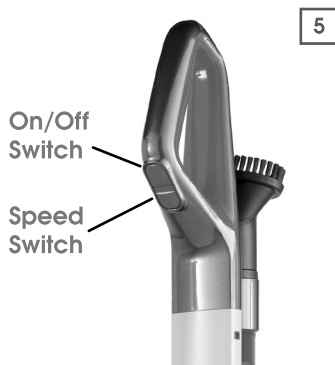


## Operation

4. Place your foot on the body and pull the handle back (Fig 4).



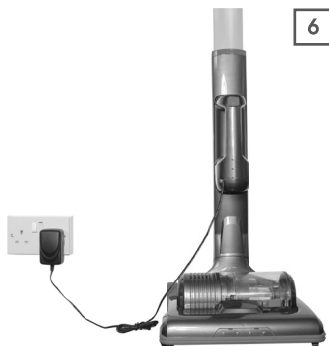
5. a) Press the on/off button to turn on (Fig 5).  
b) Press the +/- button to adjust between low or high speeds (Fig 5). Low speed for hard floors and high speed for carpeted surfaces.



## Battery Charging

DO NOT PLUG CHARGER INTO THE MAINS ELECTRICITY SUPPLY UNTIL THE UNIT FULLY ASSEMBLED

1. When all three battery lights are off the battery needs to be recharged. Plug the charger in and connect it to the battery (Fig 6).



2. As the battery is charging the 3 red lights will light up one by one (Fig 7).



## Emptying the Dust Tank

1. Lay the handle back so it is laying flat on the floor (Fig 8).



2. Using one hand, pull on the locker and bar switch and remove the dust tank with the other hand (Fig 9).



3. Before opening, position the dust tank above your waste bin. Open the dust tank by pressing the release button and the lid will open to remove waste. Gently shake the dust tank to completely empty all the waste. Once empty, close the dust tank lid (Fig 10).

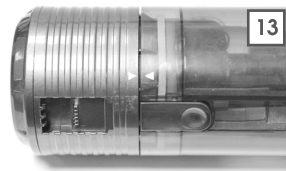
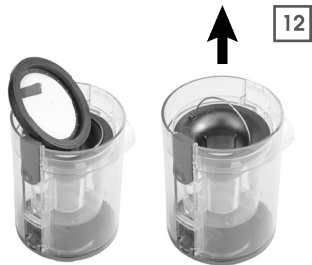




## Cleaning the filters

THIS MUST BE DONE ONCE A MONTH  
(for heavier vacuum usage, clean the filter accordingly)

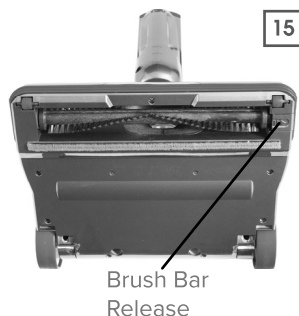
1. Remove the dust tank from the upper cover. To do this, press the red button on the side of the dust tank and separate the dust tank from the motor unit (Fig 11).
2. Remove both the white & black sponge and cone filter and wash them with warm water. When clean, leave them to dry in a warm, well ventilated place, making sure, to squeeze out any excess water from the sponge filter (Fig 12). It is recommended to leave the filter for 24 hours to completely dry before re-assembly
3. To re-assemble the dust container and motor units together. Ensure that the units join together using the triangular markings to correctly line up (Fig 13).



## Clearing a Blockage

IF THE MOTOR BRUSH HEAD BECOMES BLOCKED DURING USE, IT WILL STOP AND THE INDICATOR LIGHTS WILL TURN OFF

1. Before checking for a blockage, remove the battery from the unit (Fig 14).
2. Lay the base unit upside down on a flat surface to gain access to the brush head. Carefully pull any hair or fibre from the brush bar (Fig 15). The brush bar can also be removed for further cleaning by pushing the release button to the right (side of the brush head) and then carefully removing the brush bar.



## Using the Handheld Vacuum

1. Detach the battery pack from the body of the vacuum cleaner (Fig 16).



2. Remove the dust tank from the vacuum cleaner brush head (Fig 17).



3. Connect the battery pack to the dust tank (Fig 18). Ensure that the handle locks onto the dust tank correctly and is clipped into place.



4. Connect the desired attachment into the connection on the front of the dust tank (Fig 19).



5. Turn on the vacuum by pressing the on/off switch (Fig 20).



## Storing the Vacuum

1. Remove the accessory holder from the vacuum cleaner (Fig 21).

21



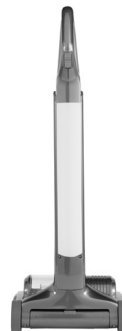
2. Press the button and pull the handle out (Fig 22).

22



3. Hang the holder onto the vacuum via the hook (Fig 23).

23



<b>TROUBLESHOOTING</b>	
<b>Vacuum Not Cleaning Well</b>	<ol style="list-style-type: none"> <li>1. Empty the dust bin</li> <li>2. Check dust bin is correctly fitted</li> <li>3. Check the filter is correctly fitted</li> <li>4. Clean the filters</li> </ol>
<b>Vacuum has stopped or won't work</b>	<ol style="list-style-type: none"> <li>1. Charge battery</li> <li>2. Clear debris from brush bar</li> </ol>
<b>Battery will not charge</b>	<ol style="list-style-type: none"> <li>1. Check connections</li> <li>2. Check wall socket power is switched on</li> </ol>

<b>TECHNICAL SPECIFICATION</b>	
<b>Voltage</b>	22.2V
<b>Battery Capacity</b>	2200mA
<b>Rated Power</b>	90W
<b>Suction Power</b>	30W
<b>Vacuum</b>	7Kpa
<b>Air Flow</b>	1.2m <sup>3</sup> /s
<b>Dust Tank Capacity</b>	0.8L
<b>Noise</b>	70dB

## After Sales Support

If you need help using your product, please contact Giani Ltd:-

- Telephone: 0161 480 6204.
- Email: [info@gianiuk.co.uk](mailto:info@gianiuk.co.uk).
- Website: [www.gianiuk.co.uk](http://www.gianiuk.co.uk).  
(Replacement instruction manuals are available to download from the website).

## Product Guarantee (UK Only)

If your appliance ceases to function within 1 year from the date of purchase, the retailer will replace it free of charge, provided:

- You have not misused, neglected or damaged it
- It has not been modified (except by Giani Ltd)
- It was not purchased second hand
- It has not been used commercially
- You have not fitted a plug incorrectly
- You can supply proof of purchase, indicating the price you paid and where and when the appliance was purchased.

This guarantee does not affect your statutory rights.

## Disposal Information

IMPORTANT INFORMATION FOR CORRECT DISPOSAL OF THE APPLIANCE IN ACCORDANCE WITH EC DIRECTIVE 2002/96/EC

At the end of its working life, the appliance must NOT be disposed of as urban waste.

It must be taken to a special local authority differentiated waste collection centre or to a dealer providing this service.

Disposing of a household appliance separately avoids possible negative consequences for the environment and health deriving from inappropriate disposal and enables the constituent materials to be recovered to obtain significant savings in energy and resources. As a reminder of the need to dispose of household appliances separately, the product is marked with a crossed-out wheeled dustbin.

**Are you having problems with your vacuum?  
Do you require a replacement filter?  
Do you require spare parts?**

Before returning this item to your place of purchase  
Please contact Giani at:

Email - **info@gianiuk.co.uk**

Website - **www.gianiuk.co.uk**

**FLOORMASTER**<sup>TM</sup>

Giani Limited - SK2 6RH  
**info@gianiuk.co.uk**



2011/65/EU