

## Food Processor & Blender

### Instruction Manual

Model Reference: GCGM-6010C

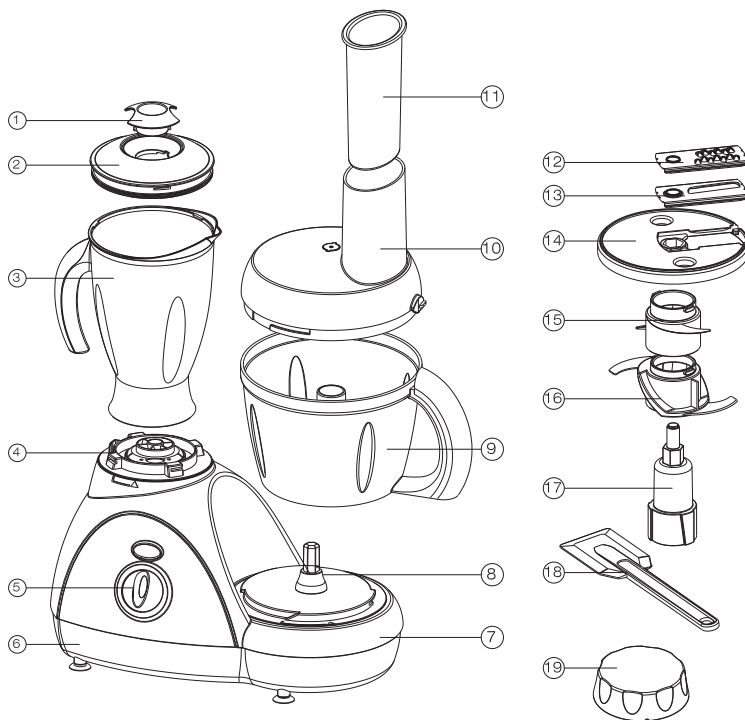
Congratulations on choosing to buy a Giani Cucina product. All products brought to you by Giani are manufactured to the highest standards of performance and safety. We hope you enjoy using your purchase for many years to come.

## Technical Spec

Voltage: 220-240V 50Hz

Power: 500W

## Component Parts



- (1) Blender Jug Cup Measuring Cup
- (2) Blender Jug cover
- (3) Blender Jug
- (4) Switch Connector
- (5) Knob
- (6) Power Unit
- (7) Button Switch
- (8) Axis Tube
- (9) Mixing Bowl
- (10) Bowl Cover(Plastic)

- (11) Measuring Cup
- (12) Shredding Knife
- (13) Slicing Knife
- (14) Knife Support
- (15) Whisking Blade
- (16) Chopping Blade
- (17) Blade Support
- (18) Scoop
- (19) Protect cover

## General Instructions

Please read this handbook as it gives important instructions about safety, use and maintenance of the Food Processor and Blender. Keep for future reference.

- Do not leave parts of the packaging (plastic bags, foam polystyrene, nails etc) within reach of children.
- Make sure the data on the rating plate corresponds to that of the main power supply before plugging into an outlet. If you're unsure, please contact professional, qualified personnel.
- It is recommended that you do not use any adapters or extensions of any kind when operating this product. Use devices that are certified to existing safety standards only.
- **Any installation that doesn't follow these instructions may endanger your safety and forfeit the guarantee.**
- The Food Processor and Blender must be used for the purpose for which it was designed only.
- Like all electrical equipment: do not operate the appliance with wet hands
  - do not use the appliance anywhere other than a domestic environment
  - do not leave the appliance in direct sunlight
  - do not allow unattended children to use the appliance
  - never pull the cord or appliance from the outlet, unplug responsibly
  - do not leave the appliance plugged in to the outlet unattended
  - never submerge the appliance into water or any other liquids
- Seek professional, qualified assistance if the cord needs replacing.
- Switch off and do not mis-handle the appliance if it should breakdown or become faulty. Contact an authorised Service Centre for repairs.
- Our company may not be held liable for injury to any person using the device in anyway that is not recommended in these instructions.
- After using the appliance let it rest and cool down before re-using. We recommend using the appliance for 1 minute before taking an interval and then continuing with your preparations and so forth. This ensures the appliance will not over-heat and break.

Read this instruction manual to familiarize yourself with all of the parts associated with your new Food Processor and Blender.

Make sure you clean all of the parts and accessories, in contact with food, before using the appliance for the first time. (see "Cleaning" page.5)

## Warning

- Always take care when handling and fitting the blades on the appliance. Make sure the appliance is unplugged from the main outlet before carefully removing from the bowl to clean. **Sharp objects should be kept well away from children!**
- This appliance is not intended for use by children, only by responsible adults. **Children should be supervised at all times!**

## How to Use

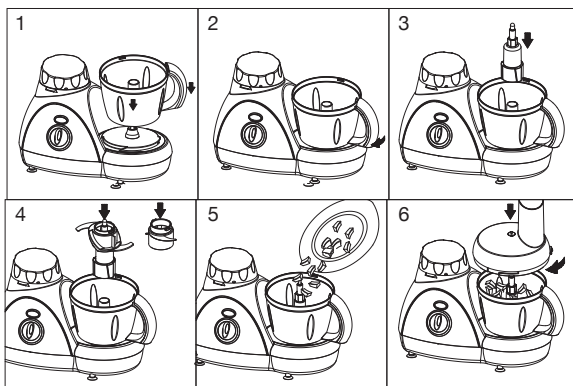
Your new Food Processor and Blender will help you to prepare a lot of basic mixtures that you can use for recipes. Please abide by the following instructions to achieve the best results and to keep your appliance in good, working condition.

### Attention!

- Never exceed the maximum quantities below
- Never pour liquids hotter than 75°C into the bowl and/or blender
- Never leave the appliance unattended while it is on
- Never make the appliance work while it is empty
- Never touch the moving parts
- Never put your fingers or utensils inside the lid opening
- Never press down the ingredients into the lid opening with your hands
- Do not use the appliance to work hard ingredients (eg. frozen meats, cheese, ice)
- Do not remove the lid and never replace accessories without switching off first
- Do not remove the ingredients from the bowl before removing the blade

## A. Mixing Bowl

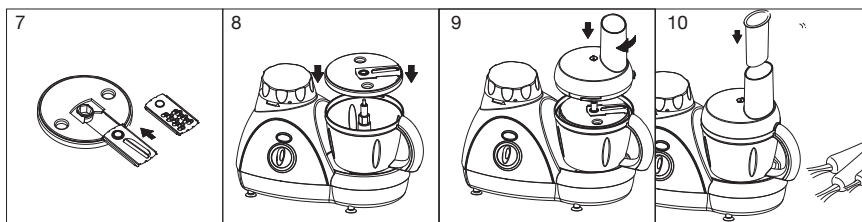
- I. Chopping Function** - put the plastic bowl on the power unit and turn the handle in a clock-wise direction, as shown in Diagram 1 & 2.
- put the blade support on the axis in the middle of the bowl and press it to the bottom. Then fix the chopping blade to the blade support, as shown in Diagram 3 & 4.
- Warning:** The blade is sharp. Please only hold the plastic part while using.
- Put the food (eg. Meat) into the bowl, as shown in Diagram 5. Large pieces of food need to be cut into smaller pieces.
  - Put the cover on the bowl, and turn it until hearing a clicking sound. This is the cover locking into position. As shown in Diagram 6.
  - Fix the plug to the electric socket, press the button switch to choose a speed.
  - When the chopping is finished, press the button switch to "0". After the blade stops, pour out the food.



**II. Whisking Function** - Mixing Function has the same steps as the Chopping Function, only change change the Chopping Blade to the Shredding Blade. It is used for mixing and whisking foods such as eggs.

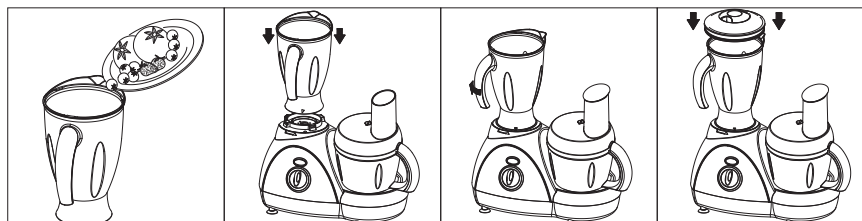
**II. Slicing & Shredding** - Fix the Slicing/Shredding Knife to the Knife Support, as shown in Diagram 7. The Slicing Knife cuts the food into slices and the Shredding Knife cuts the food into shreds.

- Put the bowl on the power unit and then turn the bowl in a clock-wise direction, until hearing the clicking sound which indicates the bowl is locked into place. Put the Knife Support on the axis in the middle of the bowl, as shown in Diagram 8.
- Put the cover on the bowl and turn it until hearing the clicking sound again. As shown in Diagram 9.
- Fix the plug to the mains outlet and turn the switch to choose the level you require.
- Feed your chosen food down the plastic Bowl Cover and use the Measuring Cup to gently push the food down into the Mixing Bowl. Diagram 10.
- When the operation is finished, press the switch to "0". After the blades have stopped completely, pour out the food.



## B. Blender Jug

- Put your chosen food(s) into the Blender Jug and fix the Blender Jug Cover on tightly.
- Put the Blender Jug on the power unit so the cup support connects with the power unit.
- Connect the power plug of the machine and switch on the Food Processor. Turn the knob to the required level (The speed is increased by levels, PULSE is the highest level).
- You can add some more liquid material (such as oil or cream) to the food when mixing.
- Turn the knob to "0" level and shut off the machine after working. Pour the mixed food out of the Blender Jug.



## Ingredients List

### Bowl

FUNCTION	INGREDIENT	MAX QUANTITIES	MAXIMUM TIMES(s)	
			SLICING	SHREDDING
SLICING	MELON	400g	50s	30s
	CARROT	400g	50s	30s
CHOPPING & WHISKING	MEAT	300g(about 10g/piece)	30s	
	HAM	300g(about 15g/piece)	30s	
	ONIONS	400g(about 20g/piece)	30s	
	EGG	six yolks	25s	
	STRAWBERRY	200g	25s	
	CHEESE	100g	20s	
	ALMONDS	100g	20s	
	HAZELNUTS	100g	20s	
	WALNUTS	100g	20s	

### Blender Jug

material	MAX QUANTITIES	MAXIMUM TIMES (s)
apple	250g	30s
orange	300g	30s
grape	250g	30s
strawberry	250g	30s
material volume: 20X20X20mm <sup>3</sup> /pc, water: 400ml.		

## Cleaning

- Always unplug from the power outlet before cleaning.
- Clean the Power Unit (6) with a soft and slightly damp cloth. **Do not wash it under runner water.**
- All accessories can be washed by hand or in the dishwasher.
- For hand washing, use tepid water and your usual washing detergent. **Be careful of the steel blade.**
- For washing in the dishwasher, place the accessories in the upper part and make sure the water never exceeds a maximum of 50°C.
- Never use chemical or abrasive substances.

## Note

When you have finished cleaning, make sure all parts are not obstructed by solid waste. If necessary, use a soft brush to remove left over residue. **Ensure the appliance is unplugged from the mains at all times.**

The blades cannot be sharpened. Replace them if they are not cutting properly or are worn. Contact an authorized Service Centre to purchase accessories, parts liable to wear and for maintenance work on your appliances.

## Storage

Make sure your appliance and all its accessories are completely dry before putting them away. Your Food Processor and Blender has a space-saving storage system where all accessories can be put away tidily in the bowl.

## Attention!

To avoid damage to the Food Processor and Blender, **NEVER** use with the accessories still inside.



The WEEE directive requires that old or defective electrical and electronic products must be disposed of in an environmental friendly way. The symbol means that your product must be collected separately. Please contact your community for the nearest collected centre.



CUCINA  
by *Giani*

Giani Limited - SK2 6RH